

RVS-X5 (V4.0)

Mobile Digital Video Recorder



Main Features

- ◆ Supports 8 channels AHD (1080P)+4 channel IPC (1080P)
- ◆ Modular design for easy maintenance
- ◆ Revolutionary anti-vibration technology for 360 degree installation
- ◆ Supports 2.5" 2TB hard disk storage and SD card for mirror recording
- ◆ Dual streams for local recording and wireless transmission
- ◆ Internal GPS for location tracking
- ◆ Built-in 3G/4G for live view and remote management (optional)

Overview

X5-E0804 is developed from the brand new platform N9M, which is an advanced and function-extensive Mobile Video Recorder specially designed for network high definition, analog audio & video input and excellent extension. It uses high-speed processor and embedded operating system, patented file system 4.0 to ensure the safety and integration of important data, combining with H. 264 video compression / decompression technology, network technology and GPS locating technology. It can realize AHD 1080P and 720P high definition, IP 1080P and 720P high definition, WD1, WHD1, WCIF, D1, HD1, CIF video recording and vehicle driving information recording, as well as wireless data upload. With center software it also achieves alarm linkage central monitoring, remote management and playback analysis. It is powerful with modular design, flexible installation, easy maintenance and high reliability.

Specification

Function Overview		Preview, Recording, Playback, Network, Locating
System	OS	Linux 3.0.8
	Control Mode	CP4, Easy Check, Network (3G/4G/WIFI), Mouse
Video	Input	8 channels AHD (1080P)+4 channel IPC (1080P)
	Output	2 channels
	Total Resource	PAL: 8*720P@25FPS (AHD) +4*1080P@30FPS (IPC) Or 8*1080P@12FPS (AHD) +4*1080P@30FPS (IPC) NTSC: 8*720P@30FPS (AHD)+4*1080P@30FPS (IPC) Or 8*1080P@15FPS (AHD)+4*1080P@30FPS (IPC)
	Video Signal Standard	Electrical level: 1Vpp Impedance: 75Ω NTSC/PAL Optional
Audio	Input	12 channels
	Output	2 channels
	Audio Signal Standard	Electrical level: 2Vpp Input impedance: 4.7kΩ
Display	Display Split	1/4/9 Image display
	OSD	GPS information, alarm, temperature, acceleration, voltage, device information, software version, MCU version, network status
	Operation Interface	Semi-transparent GUI
Recording	Video/Audio Compression	Video: H.264
		Audio: ADPCM, G.711A, G.711U
	Image Resolution	PAL: 1080P, 720P, WD1(928X576), WHD1(928X288), WCIF(464X288), D1(704X576), HD1(704x288), CIF(352x288);
		NTSC: 1080P, 720P, WD1(928X480), WHD1(928X240), WCIF(464X240), D1(704x480), HD1(704x240), CIF(352x240);
	Image Quality	Digital: 720P(1280X720)
	Image Quality	8 Levels adjustable
	Recording Mode	Schedule/Alarm(sensor trigger, speed, acceleration, video loss, temperature)
	Pre-recording	0-60minutes
Post-recording	0-30 minutes	
Mirror Recording	Yes	

Specifications continued

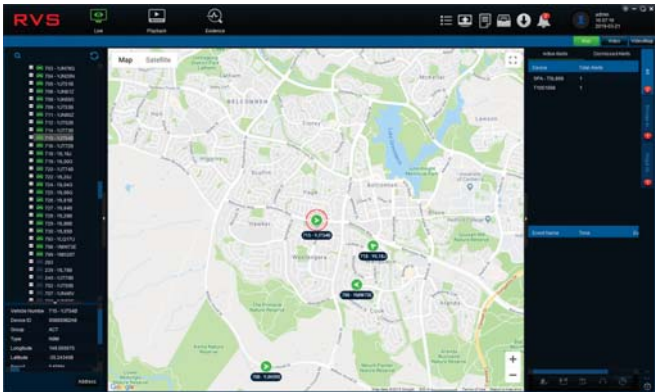
Playback	Playback Channel	8 channels by local playback
	Search Mode	Date/time, channel, event
Network	3G/4G	EVDO/WCDMA/TDD-LTE/FDD-LTE
	WIFI	802.11b/g/n
	Ethernet	RJ45 x 1 (10/100 M/1000M)
	IPC Ethernet	6-pin M12 (4x10/100M, PON power supply)
Locating	GPS	Location tracking, speed detection and time sync
Storage	Hard disk	Supports 2.5" hard disk up to 2TB
Interface	USB	USB2.0 x 2
	SD	SD slot x 1
	SIM	SIM slot x 2
	RS232	RS232 X 2
	RS485	RS485 X 2
	Sensor	8 inputs, 2 outputs
	Serial	G-sensor (Internal)
	Speed	1 channel pulse speed detection
	Interface	Touch panel CP4 Optional
	Intercommunication	I MIC interface
Power	Input	DC8-36V, ACC
	Output	5V@500mA, 12V@500mA
	Max Power Consumption	105.3W
	Standby Power Consumption	≈0W

Product Connection View

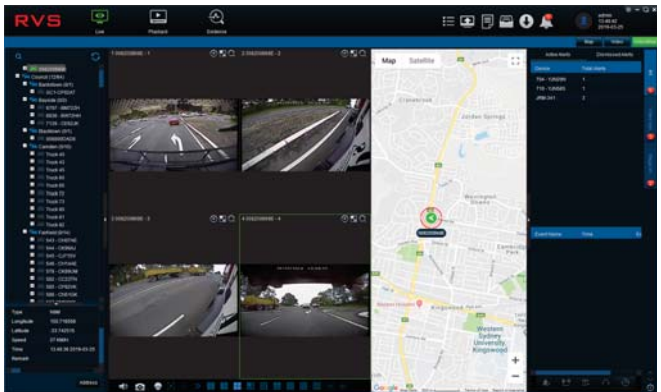
Physical Characteristic	Dimension (L × W × H)	295 x 222 x 89 mm
	Weight	2.6Kg
Environment	Operating Temperature	-40°C- +70°C(With heater) or -10°C- +70°C
	Operating Relative Humidity	8%~90%

PC Software - roam

The roam Software allows the user to extract video and GPS information from the DVR's removable drive, and where a sim is installed, allows a user remote access to the DVR, live GPS data, live camera vision as well as historical GPS and video.



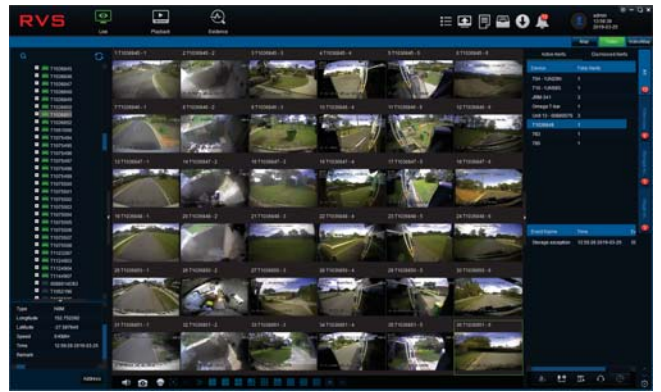
Live GPS data for multiple vehicles.



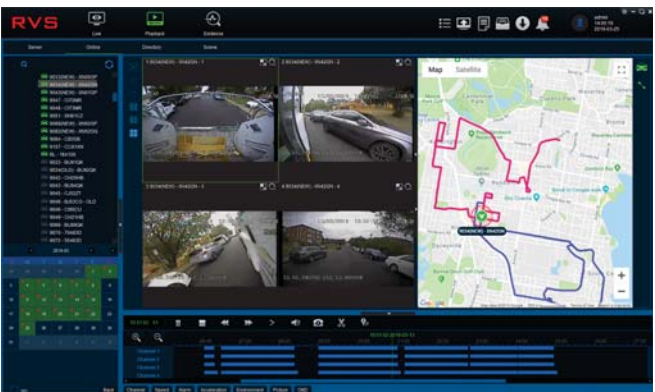
Live GPS data displayed with live video from selected vehicle.



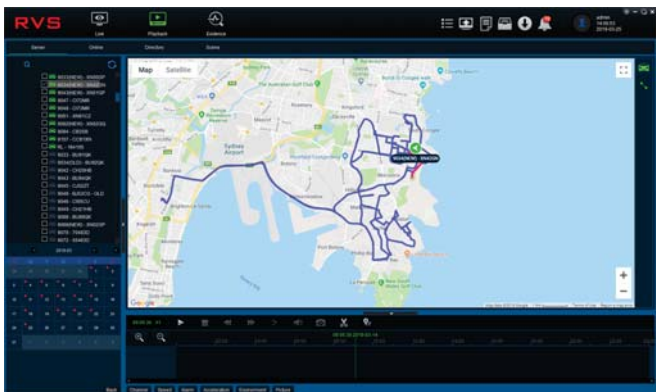
Live viewing of cameras on vehicle (sim card required)



Live viewing of cameras on multiple vehicles at one time.












Historical video can be remotely accessed from DVR's hard drive. GPS location displayed simultaneously. (sim card required)
 Note: This video and GPS information is also able to be viewed directly from the hard drive when removed from the DVR and connected to the computer that has the roam program loaded.



Historical GPS data from a vehicle can be viewed. (sim card required)

Standard accessories

Accessories	Description	Quantity	Accessories	Description	Quantity
	Vehicle fuses (7.5A and 15A)	2		DB44 wire	1
	9 pin aviation power input wire	1		Remote controller	1
	MDVR key	1		Braces	2
	Screws	8		7 pin aviation amplifier output wire	1
	USB wire	1			

Optional accessories

Accessories	Description	Accessories	Description
	UPS3.0		Card reader
	Inertia sensor		LED panel
	Easy Check		Multi-functional displayer CP4
	6pin aviation head transforming to RJ45		On - Board Diagnostics
	Fire proof box		4 ports PON switcher
	4 ports POE switcher		8 ports POE switcher
	DB26 serial alarm box		Built-in WIFI module and Antenna
	Built in 3G/4G module and Antenna		GPS module and Antenna