



### Main Features

- ◆ 4 channels AHD + 1 channel IPC
- ◆ Supports Hard disk for main recording
- ◆ Supports SD card for mirror recording
- ◆ Supports GPS for location tracking
- ◆ Supports WIFI for video files download optional
- ◆ Built-in 3G/4G for live view and remote management optional
- ◆ With more excellent software performance
- ◆ Adopts rich interfaces

### Overview

The DVR-X3 (H0401) is a functional Mobile Network Video Recorder specially designed for vehicle video surveillance and remote monitoring. It has a high-speed processor and embedded operating system, combining with the most advanced H.264 video compression / decompression technology, 3G/4G network, GPS positioning technology, as well as WIFI (optional). It supports not only video recording in 1080P, 720P, AHD, WD1, WHD1, WCIF, D1, HD1 and CIF formats, but also vehicle travel information recording and wireless data upload. With centre software, it also achieves alarm linkage central monitoring, remote management and playback analysis. It is easy to use with simple design, with anti-vibration ability, anti-electromagnetic interference, radiation, flexible and convenient installation, hard disk storage, SD card backup design and high reliability.

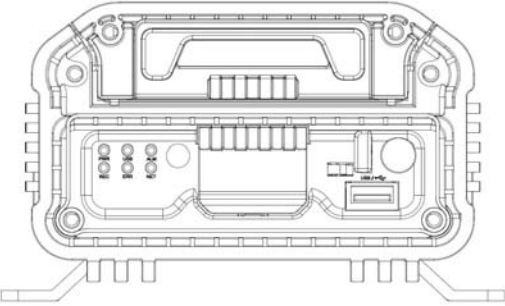
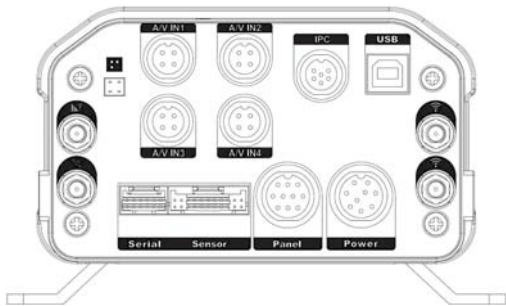
### Specification

<b>Function Overview</b>		Preview, Recording, Playback, Network, Locating
<b>System</b>	OS	Linux 3.0.8
	Control Mode	Easy Check, network, CP4, mouse (3G/4G/WIFI)
<b>Video</b>	Input	4 channels AHD + 1 channel IPC
	Output	1 channel
	Total Resource	PAL: (4x25)FPS 720P(AHD)+1080P@30FPS(IPC) Or (4x12)FPS 1080P(AHD)+1080P@30FPS(IPC) NTSC: (4x30)FPS 720P(AHD)+1080P@30FPS(IPC) or(4x15)FPS 1080P(AHD)+1080P@30FPS(IPC)
	Video Signal Standard	Electrical level: 1Vpp Impedance: 75Ω NTSC/PAL Optional
	UTC	Support setting AHD camera OSD
<b>Audio</b>	Input	5 channels (1 channel IPC audio input)
	Output	1 channel
	Audio Signal Standard	Electrical level: 2Vpp Input impedance: 4.7kΩ
<b>Display</b>	Display Split	1/4/9
	OSD	Channel No., GPS Location, Alarm, Vehicle No, Speed, Date/Time
	Operation Interface	Semi-transparent GUI
<b>Recording</b>	Video/Audio Compression	Video: H.264
		Audio: ADPCM (G.711A, G.711U optional)
	Image Resolution	PAL: 1080P,720P,WD1(928X576),WHD1(928X288), WCIF(464X288),D1(704X576),HD1(704x288), CIF(352x288); NTSC: 1080P,720P,WD1(928X480),WHD1(928X240), WCIF(464X240),D1(704x480),HD1(704x240),CIF(352x240); Digital: 1080P(1920X1080),720P(1280X720)
	Image Quality	1-8 levels adjustable (1 is the best)
	Recording Mode	Boot up/Schedule/Alarm
	Pre-recording	0-60minutes
	Post-recording	0-30 minutes
	Mirror/Dual Recording	Support

## Specifications continued

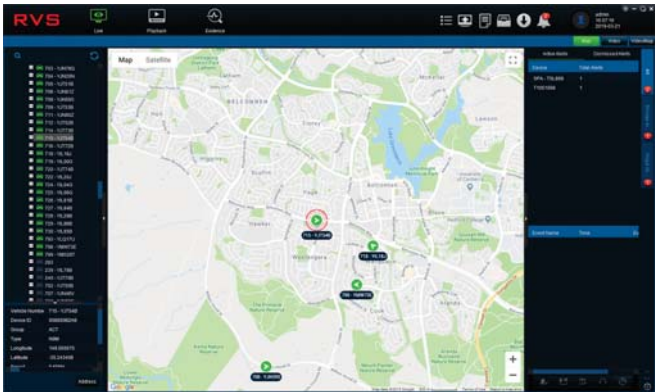
<b>Playback</b>	Playback Channel	1 channel by local playback
	Search Mode	Date/time, channel, event
<b>Network</b>	3G/4G optional	EVDO/WCDMA/TDD-LTE/FDD-LTE
	WIFI	802.11b/g/n
	Network connection	WIFI/3G/4G optional
	IPC Ethernet	6-pin M12(10/100M x 1, PON power supply)
<b>Locating</b>	GPS	Location tracking, Speed detection and Time sync
<b>Storage</b>	HDD	2.5" SATA hard disk x 1 / SSD
	SD Card	1 x SD (Max. 256G)
<b>Interface</b>	USB	1 x USB2.0(Type A)+ 1 x USB2.0(Type B)
	SIM	SIM slot x 1
	RS232	RS232 x 2
	RS485	RS485 x 2
	Sensor	8 inputs, 2 outputs
	Speed	1 channel pulse speed detection
	Control panel	CP4 optional
	Inter communication	1 MIC interface
<b>Power</b>	Input	DC8-36V, ACC
	Output	5V@500mA, 12V@500mA
	Max Power Consumption	30W
	Standby Power Consumption	≈0W

## Dimension (mm)

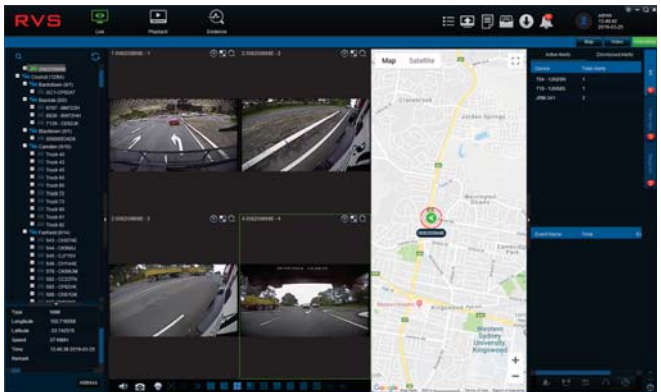
Front panel		Rear panel	
			
<b>Physical Characteristic</b>	Dimension (L x W x H)	255.3 x 150 x 89.1mm	
	Weight	2.0 KG	
<b>Environment</b>	Operating Temperature	-10°C~ +70°C; -40°C~ +70°C( with heater)	
	Operating Relative Humidity	8%-90% (No Condense)	

## PC Software - roam

The roam Software allows the user to extract video and GPS information from the DVR's removable drive, and where a sim is installed, allows a user remote access to the DVR, live GPS data, live camera vision as well as historical GPS and video.



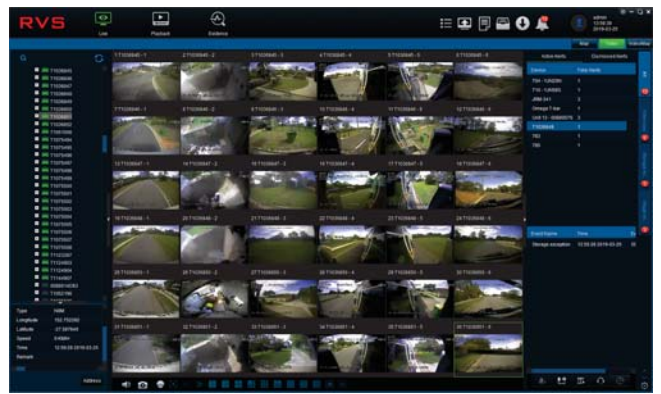
Live GPS data for multiple vehicles.



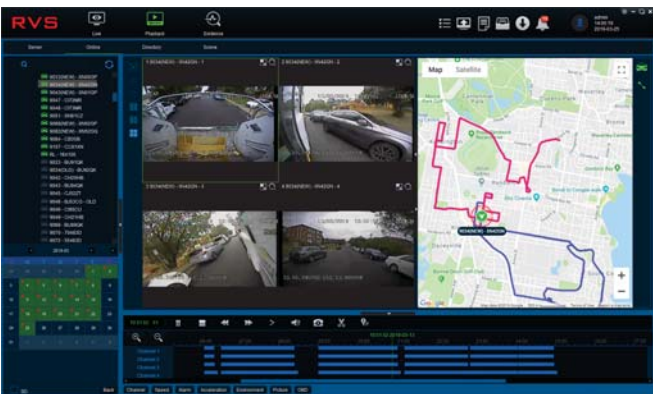
Live GPS data displayed with live video from selected vehicle.



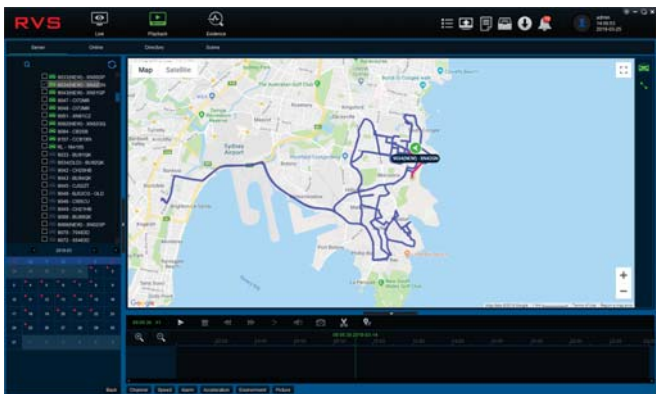
Live viewing of cameras on vehicle (sim card required)



Live viewing of cameras on multiple vehicles at one time.



Historical video can be remotely accessed from DVR's hard drive. GPS location displayed simultaneously. (sim card required)  
 Note: This video and GPS information is also able to be viewed directly from the hard drive when removed from the DVR and connected to the computer that has the roam program loaded.
















Historical GPS data from a vehicle can be viewed. (sim card required)

## Standard accessories

Accessories	Description	Quantity	Accessories	Description	Quantity
	Vehicle fuses (7.5A and 15A)	2		MDVR key	1
	9 pin aviation power input wire	1			

## Optional accessories

Accessories	Description	Accessories	Description
	UPS3.0		Card reader
	Inertia sensor		LED panel
	Easy Check		Multi-functional displayer CP4
	A/V OUT cable		On - Board Diagnostics
	Fire proof box		Serial connection box
	Disk reader		Serial alarm wire
	Built in 3G/4G module and Antenna		GPS module and Antenna
	Built-in WIFI module and Antenna		Megaphone